



IIRP Factbook 2009

TABLE OF CONTENTS

GENERAL INFORMATION.....	3
STUDENTS.....	7
FACULTY AND STAFF	9
ACADEMIC INFORMATION	10
NON-CREDIT PROFESSIONAL DEVELOPMENT	14
FINANCES	16

General Information

Mission Statement

The International Institute for Restorative Practices is dedicated to the advanced education of professionals at the graduate level and to the conduct of research that can develop the growing field of restorative practices, with the goal of positively influencing human behavior and strengthening civil society throughout the world.

History

The International Institute for Restorative Practices (IIRP) grew out of the experience of the Community Service Foundation (CSF) and Buxmont Academy, two Pennsylvania nonprofit organizations that have been providing education, counseling, residential and other services for troubled youth and their families in southeastern Pennsylvania since 1977.

In 1994 the strategies employed by CSF and Buxmont were significantly influenced by a practice developed in New Zealand and Australia, originally called “family group conferencing,” and by the criminal justice reform movement that began in North America called “restorative justice.” CSF and Buxmont integrated those practices and philosophies into their own programs and then developed educational programs, websites, international conferences and publications in support of an emerging discipline that came to be known as “restorative practices.”

The underlying premise of restorative practices is simple: that human beings are happier, more productive and cooperative, and more likely to make positive changes in their behavior when those in positions of authority do things with them, rather than to them or for them. Punitive and authoritarian *to* styles or permissive and paternalistic *for* styles are not as effective as restorative and authoritative *with* styles — which encourage democratic participation and responsive leadership. Restorative practices have implications for education, counseling, parenting, social work, criminal justice, organizational management and regulating or managing any social phenomenon.

CSF and Buxmont jointly advanced the new field of restorative practices through the 1990s. In 1999 they decided to create a specialized scientific and educational institution to foster the development of restorative practices. The International Institute for Restorative Practices was incorporated in 2000 as a nonprofit organization in Pennsylvania and soon applied to the Pennsylvania Department of Education to become a specialized graduate degree-granting institution.

For more information, contact Judy Happ, Vice President for Administration, at 215-345-9585.

Board of Trustees

http://www.iirp.org/faculty_staff.php

CHAIR

Stephen P. Moyer, Esq., J.D.
Board member since 2000
Attorney, Grim, Biehn & Thatcher

VICE CHAIR

Richard Kardon, M.Ed.
Board member since 2000
Community Liaison Director, Community Service Foundation

SECRETARY

June Rothkopf
Board member since 2004
Managing Director, Center for Advanced Emotional Intelligence

TREASURER

Joseph Roy, Ed.D.
Board member since 2004
Assistant Superintendent, School District of Springfield Township

TRUSTEES

Muriel Berkeley, Ph.D.
Board member since 2008
President, Baltimore Curriculum Project

Zvi Gabbay, Esq., J.S.D.
Board member since 2008
Director of Enforcement, Israeli Securities Authority

Sharon Lewis, M.S.
Board member since 2009
Director of Research, Council of the Great City Schools

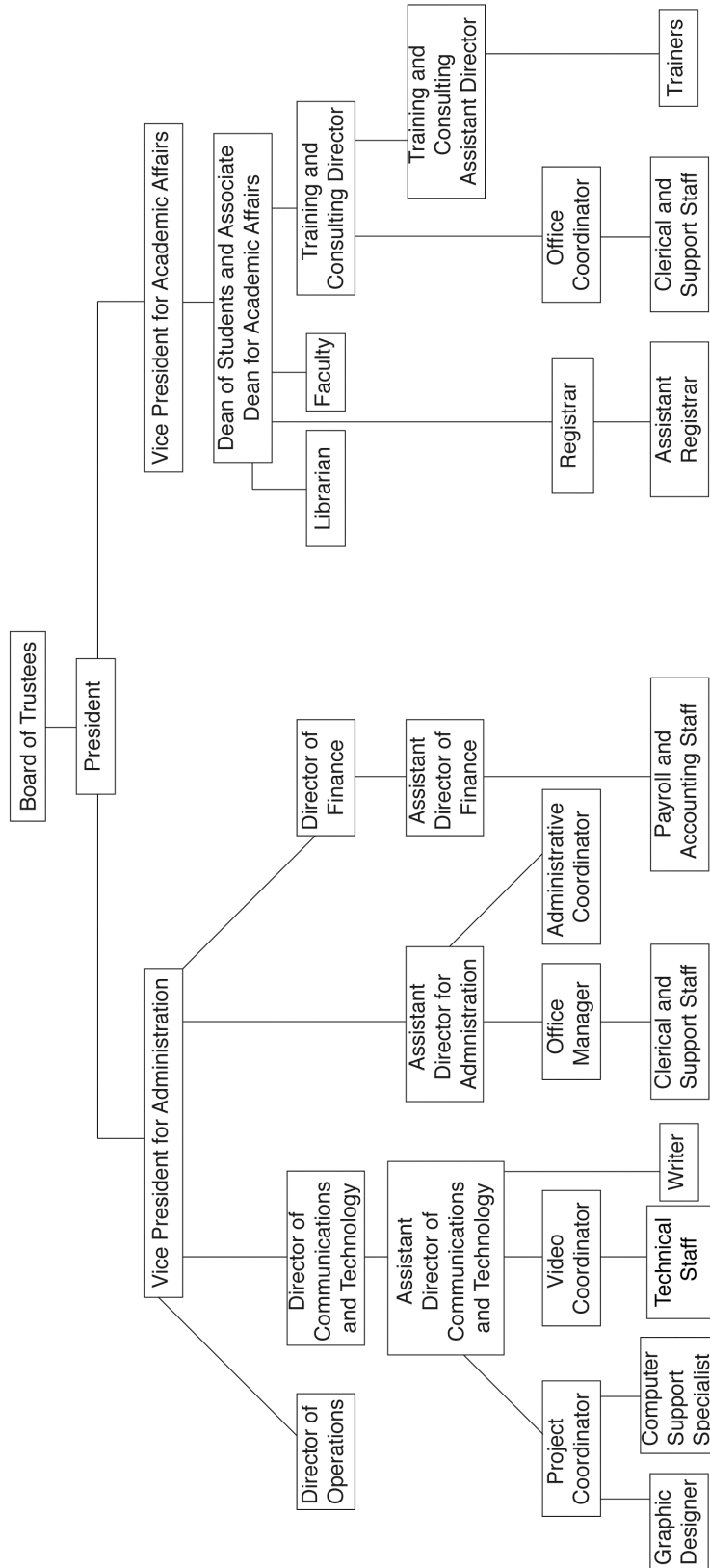
Carol Palmer, J.P.
Board member since 2009
Permanent Secretary, Ministry of Justice, Jamaica (retired March 2009)

Binny Silverman
Board member since 2004
Vice President, Silverman Family Partnerships

Ted Wachtel
Board member since 2000
President & Founder, International Institute for Restorative Practices

William Warner, Ed.D.
Board member since 2000
Assistant to the Dean/Compliance Officer, School of Education, Gwynedd-Mercy College

Organizational Chart



Facilities

IIRP Main Campus, Graduate School Office and Graduate School Bookstore

The IIRP Main Campus is located in the historic district of downtown Bethlehem, Pennsylvania, at 544 Main St., on the corner of Main and Walnut streets.

The IIRP Graduate School office is located at 531 Main St., 1st Floor, Bethlehem.

The online bookstore is located at http://www.iirp.org/books_n_videos_grad.php.

Satellite Classrooms

Lansdale Center, 801 W. 2nd St., Lansdale, Pennsylvania

Woodlyn/Philadelphia Center, 1307 W. MacDade Blvd., Woodlyn, Pennsylvania

Library

The IIRP library is located at 531 Main St., 1st Floor, Bethlehem.

Computers

The library has computer workstations available for student use. Graduate students must have their own personal computer or, at the very least, regular access to computers with internet service and their own personal email addresses.

Parking

Parking is available at municipal lots near the IIRP Main Campus.

Students

Enrollment in Academic Year 2008-2009

1293 credit hours, FTES-54

Duplicate head count: 689

Unduplicated head count: 198

Gender/Ethnicity (optional student-reported data)

	MEN	WOMEN	TOTAL
Black, non-Hispanic	14	46	60
American Indian/Alaska Native	1	3	4
Asian/Pacific Islander	1	2	3
White, non-Hispanic	20	72	92
Unknown	9	30	39
	45	153	198

Occupation (optional student-reported data)

- 69 Teachers
- 18 School Counselors
- 11 School Administrators
- 6 Criminal Justice Professionals
- 14 Counselors
- 17 Social Workers
- 14 Youth Workers
- 29 Miscellaneous (Adult Literacy Education, Advocate, Attorney, Certified School Nurse, Consultant/Trainer, Director-Nonprofit, Director of Academics, Education Administrator, Educator, Financial Operations, Group Facilitator, Houseparent, Support Staff, Interpreter, Librarian, Life Skills Coordinator, Management-Consulting and Communication Trainer, Management Consultant, Non Profit Administrator, Nurse, Program Director, Retired, Reunification Worker, School Nurse, Site Administrator, Teacher/Administrator, TSS Worker, Unemployed Art Teacher, Wraparound Coordinator)
- 20 Other/Unspecified

Residence

- 157 Pennsylvania (PA counties: 17 Bucks, 5 Chester, 20 Delaware, 8 Lehigh, 20 Montgomery, 11 Northampton, 33 Philadelphia, 43 other counties)
- 41 outside of Pennsylvania

Age Range

- 7 Unknown
- 21 Ages 20-29
- 35 Ages 30-39
- 47 Ages 40-49
- 64 Ages 50-59
- 24 Ages 60+

Admissions/Graduate Programs in Academic Year 2008-2009

Highest Degree Earned — Matriculated Students

- 1 Doctorate
- 18 Master's Degree
- 32 Bachelor's Degree

Master of Restorative Practices and Education (MRPE)

- 5 Graduated
- 9 In Progress
- Time to complete degree from admission date to graduation date — Mean: 311 days (10.5 mos.), Median: 284 days (9.5 mos.)
- Time to complete degree from start of first term to graduation date — Mean: 521 days (1 yr., 5.5 mos.), Median: 511 days (1 yr., 5 mos.)

Master of Restorative Practices and Youth Counseling (MRPYC)

- 9 Graduated
- 28 In Progress
- Time to complete degree from admission date to graduation date — Mean: 432 days (1 yr., 2.5 mos.), Median: 431 days (1 yr., 2.5 mos.)
- Time to complete degree from start of first term to graduation date — Mean: 721 days (2 yrs.), Median: 654 days (1 yr., 10 mos.)

Non-degree Graduate Certificate in Restorative Practices

- 8 Completed
- Time to complete from start of first term to end of last term: 552 days (1 yr., 6 mos.)

Student Affairs

Campus Safety and Security

Crime statistics are reported on the IIRP website: <http://www.iirp.org/safety.php>. This information is provided in compliance with Pennsylvania Act 73, the Federal Student Right-to-Know, the Crime Awareness and Campus Security Act of 1990, and the Jeanne Clery Disclosure of Campus Security Policy and Campus Crime Statistics Act.

Student Representatives to the IIRP Board of Trustees

Students serve on each of the three standing Board committees: Finance and Operations, Student Affairs and Academic Affairs. Each summer, the matriculated students select three representatives to serve for the upcoming year.

Faculty and Staff

Profiles

http://www.iirp.org/faculty_staff.php

Margaret Murray, Librarian

- Trent University, B.A. (Hons.) English Literature, 1978
- Trinity College, M.A. English Literature, 1991
- Simmons College, M.S. Library and Information Science, 1995

Carolyn Olivett, Professor

- Lock Haven University, B.S. Education, 1964
- Penn State University, M.Ed. Health Education, 1997

Frida Rundell, Professor

- Johannesburg College of Education, Transvaal Teachers' Diploma, 1967
- University of South Africa, Diploma in Special Education, 1981
- Graduate School of Marketing, Diploma in Marketing Management, 1983
- University of Witwatersrand, Certificate in Instrumental Enrichment, 1988
- South African Institute of Marital & Family Therapy, Family Therapy, 1990
- University of South Africa, B.A., 1991
- University of South Africa, B.A. Honours Psychology, 1993
- University of Natal, M.Ed. Psychology, 1996
- University of Zululand, Ph.D. Community Psychology, 2000

Alia Sheety, Professor

- University of Haifa, B.A. Education, 1990
- University of Haifa, B.A. Hebrew Language, 1991
- University of Haifa, M.A. Education Administration, 1996
- Arizona State University, Ph.D. Curriculum Studies, 2001
- University of Haifa, M.B.A. Managing Educational Institutions, 2007

Thomas Simek, Professor

- State University College at Buffalo, B.S. Special Education, 1967
- State University College at Buffalo, M.S. Special Education, 1971
- State University College at Buffalo, Certificate of Advanced Study-Administration and Supervision, 1973
- Temple University, Ed.D., 1985

Carol Thomas, Professor

- University of Pittsburgh, B.S. Education, 1997
- Duquesne University, M.S. Education, 1999
- Duquesne University, Ph.D. Counselor Education and Supervision, 2007

Demographics

- 31 full time
- 18 part time

Academic Information

The International Institute for Restorative Practices is a private, not-for-profit independent higher education institution.

The IIRP Graduate School offers two degrees in the emerging field of restorative practices: a Master of Restorative Practices and Education (MRPE) degree and a Master of Restorative Practices and Youth Counseling (MRPYC) degree. Both master's degree programs share a core curriculum that represents the first part of the coursework for each degree and the basis for a 12-credit graduate certificate program. The balance of either master's degree is a curriculum specifically in Restorative Practices and Education or Restorative Practices and Youth Counseling, respectively. Thirty credits are required for completion of either degree.

Courses begin at various times throughout the summer, fall and spring terms. Students are encouraged to register well in advance of scheduled courses.

The IIRP is dedicated to the development of a graduate degree-granting institute for the education of professionals and for research in the emerging field of restorative practices.

Program Goals

Master of Restorative Practices and Youth Counseling

Students will:

1. Demonstrate knowledge and skill in restorative processes, from basic to advanced and from informal to formal.
2. Develop awareness of history, philosophy, theory and significant research about restorative practices.
3. Acquire strategies for self-evaluation and professional growth.
4. Apply approaches to counseling that empower young people to take responsibility for their choices.
5. Understand contemporary counseling practices and theories.
6. Develop an awareness of problems experienced by young people and their families.
7. Achieve proficiencies in technological capabilities and information literacy appropriate to the graduate study of restorative practices.

Master of Restorative Practices and Education

Students will:

1. Demonstrate knowledge and skill in restorative processes, from basic to advanced and from informal to formal.
2. Develop awareness of history, philosophy, theory and significant research about restorative practices.
3. Acquire strategies for self-evaluation and professional growth.
4. Apply approaches to education that empower students to take responsibility for their choices.
5. Understand contemporary educational practices and theories.
6. Develop an awareness of problems experienced by students and their families.
7. Achieve proficiencies in technological capabilities and information literacy appropriate to the graduate study of restorative practices.

Graduate Certificate Program Goals

Students will:

1. Demonstrate knowledge and skill in restorative processes, from basic to advanced and from informal to formal.
2. Develop awareness of history, philosophy, theory and significant research about restorative practices.
3. Acquire strategies for self-evaluation and professional growth.

One-Year FastTrack Master's Degree Program for Full-Time Students

The IIRP offers a one-year FastTrack master's degree program for full-time students in either the MRPE or MRPYC programs. The one-year cycle will begin in July of each year and be completed the next year by the end of June.

Summer (6 credits)

- YC/ED 501 (1 credit)
- YC/ED 502 (1 credit)
- YC/ED 503 (1 credit)
- YC/ED 530 (3 credits — formerly 504)

Fall (9 credits)

- YC/ED 510 (3 credits)
- YC 610 or ED 611 (3 credits)
- YC 630 or ED 631 (3 credits)

Winter (3 credits)

- YC 650 or ED 651 (3 credits)

Spring — early (9 credits)

- YC/ED 520 (3 credits)
- YC 620 or ED 621 (3 credits)
- YC 640 or ED 641 (3 credits)

Spring — late (3 credits)

- YC 660 or ED 661 (3 credits)

The FastTrack program is an intensive experience that includes full-time academic study coupled with part-time non-paid internships working in the restorative milieu of the IIRP's demonstration programs: CSF Buxmont schools, group homes, supervision and drug-and-alcohol treatment programs. (Students may opt to find their own part-time teaching or counseling work settings.)

Non-Degree Graduate Certificate in Restorative Practices

For those professionals who are interested in achieving knowledge and skill in restorative practices, but who are not interested in matriculating in a formal degree program, the IIRP offers a non-degree Graduate Certificate in Restorative Practices. Those seeking the Graduate Certificate must complete the 12 course credits in the Core Curriculum (below). IIRP does not consider participants in the Graduate Certificate program as matriculated students in the master's degree programs of the graduate school, although Graduate Certificate students may later apply for admission to either of the master's degree programs.

Credits and Course Hours

With the exception of three one-credit courses in Basic Restorative Processes, all the other IIRP graduate courses earn three credit hours and consist of 45 hours of class time, including final examinations.

Currently the IIRP offers classes only on a whole-day basis — from 8:30 a.m. to 4:30 p.m. They are offered primarily on weekends, but also on weekdays in the summer. The courses are participatory, stimulating and relevant. They address many learning styles by employing a variety of engaging approaches including readings, lecture, reflection, videos, role play, group discussion, small group exercises, problem solving and case study.

The whole-day classes are designed to keep things moving. They also minimize the time and travel cost of commuting to and from campus by consolidating classes into larger units of instruction. Whole-day classes are cost-effective for those students commuting substantial distances.

Curricula Overview

Core Curriculum (12 credits)		Credits
YC/ED 501	Basic Restorative Processes — Introduction (prerequisite for all courses)	1.0
YC/ED 502	Basic Restorative Processes — Restorative Conferencing	1.0
YC/ED 503	Basic Restorative Processes — Family Group Decision Making	1.0
YC/ED 510	Professional Learning Group Seminar: Restorative Project	3.0
YC/ED 520	Professional Learning Group Seminar: Restorative Skills	3.0
YC/ED 530	Foundations for Repairing Harm (formerly YC/ED 504)	3.0

—AND—

Restorative Practices and Youth Counseling Curriculum (18 credits)		Credits
YC 610	Seminar: Youth Counseling Evaluation and Research	3.0
YC 620	Restorative Practice in Communication and Intervention	3.0
YC 630	Individual Counseling: Practices for Empowering Youth	3.0
YC 640	Restorative Practices with Families and Communities	3.0
YC 650	Alcohol and Other Drugs: Working with Abuse and Addiction	3.0
YC 660	Final Seminar	3.0

—OR—

Restorative Practices and Education Curriculum (18 credits)		Credits
ED 611	Seminar: Education Evaluation and Research	3.0
ED 621	Restorative Practices and the Teacher	3.0
ED 631	Restorative Practices and the Learner	3.0
ED 641	Issues and Innovations for Restorative Education	3.0
ED 651	Educating Individuals with Special Needs	3.0
ED 661	Final Seminar	3.0

Total Master's Degree Program Credits Required **30.0**

Library

The Graduate School library, located at 531 Main St., 1st Floor, Bethlehem, specializes in books and other resources related to restorative practices. The IIRP offers its graduate students online access to relevant databases, such as its collection of conference papers and abstracts, ERIC, SocINDEX, NCJRS and Restorative Justice Online (see <http://www.iirp.org/library.php>).

Non-credit Professional Development

International Conferences

The 11th IIRP World Conference, "Restoring Community in a Disconnected World," was held October 22-24, 2008, in Toronto, Ontario, Canada. In attendance were 516 participants from 16 countries, including those from 10 Canadian provinces and territories and 17 of the continental United States. This interdisciplinary conference, featuring 120 breakout sessions, provided an international perspective on restorative practices theory and practice in a variety of settings, from education to social welfare to criminal justice.

Standard Programs (Trainings Offered)

The IIRP Training and Consulting Division is a leading provider of restorative practices training, consulting and materials throughout the world. The IIRP and its related organizations have trained thousands of individuals since its inception as the Real Justice program in 1995.

Training opportunities are offered at the IIRP Main Campus in Bethlehem. Regional trainings are also held throughout the year at metropolitan hub locations in the continental United States. Alternatively, all trainings can be delivered at work sites.

The core trainings are: Introduction to Restorative Practices, Using Circles Effectively and Facilitating Restorative Conferences. Specialized trainings include Restorative Management and Supervision, Facilitating Groups, Family Group Decision Making, Reduce Bullying with Restorative Practices and the Training of Trainers programs for Facilitating Restorative Conferences, Introduction to Restorative Practices and Using Circles Effectively.

Number of Events – Academic Year 2008-2009

- 104 onsite
- 85 licensee
- 47 speculative

States, Provinces and Countries Served

IIRP staff has offered events, with 3,647 registrants, in Alaska, British Columbia, California, Columbia, Hong Kong, Iceland, Illinois, Maryland, Michigan, New Jersey, New York, Ontario, Mexico, Texas, United Kingdom, Virginia and Vermont.

Number of Licensees (U.S. and abroad)

- 53 total licensees (U.S. and abroad)
- 35 Facilitating Restorative Conferencing (FRC) licensees
- 23 Introduction to Restorative Practices/Using Circles Effectively (Intro/Circles) licensees
- 5 licensees in both FRC and Intro/Circles

Breakout of licensee events

- 34 training events/507 registrations in Facilitating Restorative Conferences
- 30 training events/509 registrations in Introduction to Restorative Practices
- 18 training events/352 registrations in Using Circles Effectively

International Offices/Affiliates

Restorative practices training and consulting is also offered by our four international affiliate organizations: Real Justice Australia, IIRP Canada, Community Service Foundation of Hungary and IIRP UK.

eForum Subscribers

The Restorative Practices eForum is a worldwide network of people (18,040 as of June 29, 2009) who are interested in restorative practices. Members receive hopeful, useful news about meaningful change in education, criminal justice, family and social services and the workplace via a free email information service provided by the IIRP. The eForum provides members with occasional short emails that include brief summaries of significant articles, research reports or information about upcoming restorative practices events — with links to full articles.

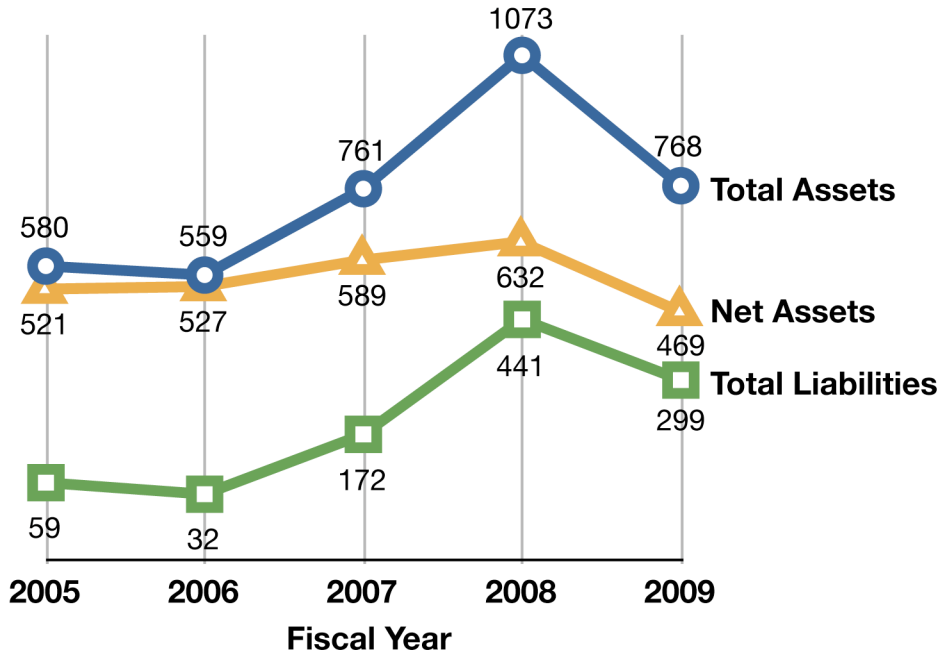
Finances

Condensed Statement of Financial Position

Fiscal years 2005-2009 (in thousands)

	2005	2006	2007	2008	2009
ASSETS					
Cash	19	32	109	106	111
Accounts Receivable	55	0	65	390	95
Equipment, Net of Depreciation	1	22	39	34	42
Prepays and Other	5	5	48	43	20
Cash-Permanently Restricted	500	500	500	500	500
TOTAL ASSETS	580	559	761	1073	768
LIABILITIES					
Accounts Payable	59	32	66	278	101
Deferred Revenue	0	0	106	163	198
TOTAL LIABILITIES	59	32	172	441	299
NET ASSETS					
Unrestricted	21	27	89	132	-31
Permanently Restricted	500	500	500	500	500
TOTAL NET ASSETS	521	527	589	632	469
TOTAL NET ASSETS AND LIABILITIES	580	559	761	1073	768

Total Assets, Liabilities and Net Assets Fiscal Years 2005-2009 (in thousands)



Highlights of Financial Operations

Fiscal years 2005-2009 (in thousands)

	2005	2006	2007	2008	2009
OPERATING REVENUES					
Contributions	435	517	1437	1595	1374
Support Service Fees	0	0	670	729	752
Tuition and Fees	0	0	154	332	565
Training and Consulting	0	0	312	367	513
Interest Income	8	20	27	19	11
Other Income	0	0	6	1	2
TOTAL OPERATING REVENUE / SUPPORT	443	537	2606	3043	2465
EXPENSES					
Instruction	243	215	440	482	466
Academic Support	0	0	94	125	194
Student Services	0	0	391	97	54
Institution Support	181	317	1618	2296	1915
TOTAL EXPENSES	424	532	2543	3000	2628
EXCESS OF REVENUE OVER EXPENSES	19	5	63	43	-163

**Operating Expenses
FY 2008–09 (in thousands)**

