

RESTORATIVE COMMUNITY CONFERENCING



OUTLINE

- ❖ What is it? (CWW RCCs 101)
- ❖ Who is involved & How it works
- ❖ Type of charges
- ❖ RCC in Alameda and San Francisco an overview
- ❖ Our Youth
- ❖ Q&A
- ❖ Thank you!

A RESTORATIVE CONFERENCE – WHAT IS IT?

Process and parts including:

- ❖ Evidenced-based model
- ❖ Truth-telling
- ❖ Facilitated dialog
- ❖ Consensus-inspired outcomes
- ❖ Direct accountability to person harmed (and other stakeholders)

WHO IS INVOLVED?

- ❖ Conference Coordinator
- ❖ Person harmed and their support
- ❖ Responsible youth (age 11 – 17) their family and support
- ❖ Police and/District Attorney

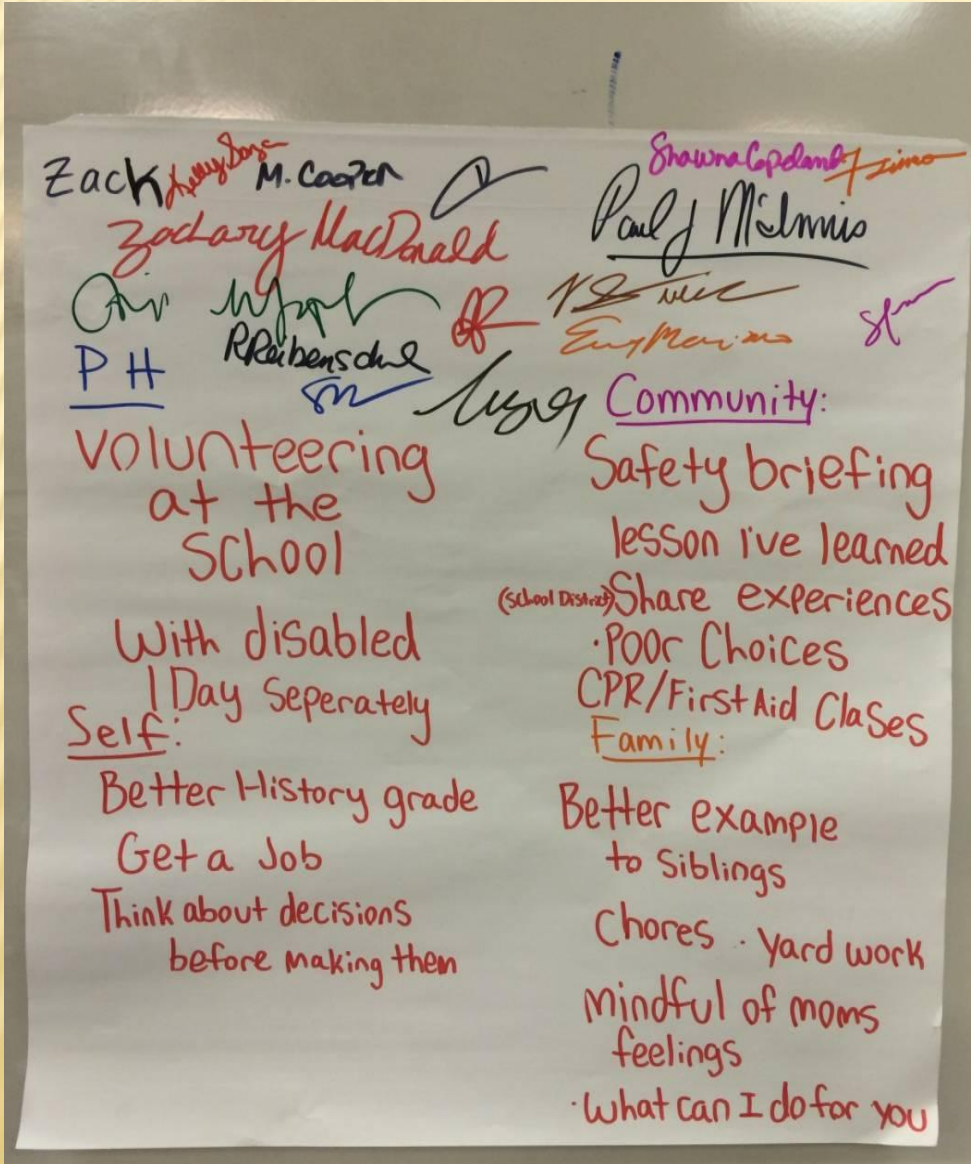


STEPS TO THE RESTORATIVE CONFERENCE

- ❖ Pre-conference
 - preparation
- ❖ Conference
 - youth accepts responsibility for harm
 - person harmed & stakeholders comment
- ❖ Plan development
 - righting the wrong
- ❖ Refine plan
- ❖ Successful plan completion
- ❖ Charges not filed



THE RESTORATIVE PLAN



❖ YOUTH MUST REPAIR HARM TO:

- The person harmed
- Their family
- The community
- Themselves

TYPES OF CHARGES/CASES

- ❖ Burglaries
- ❖ Assaults/Batteries
- ❖ Weapon possession
- ❖ Vehicle Theft
- ❖ Grand Theft/Theft of Person
- ❖ Robberies
- ❖ Sexual Assaults
- ❖ Arson
- ❖ Theft
- ❖ Possession for Sales

RCC – GOALS



- ❖ *Repair the harm*
- ❖ *Hold the youth accountable*
- ❖ *Provide victim, youth and family, and community voice in outcome*
- ❖ *Support community working together*
- ❖ *Reduce RACIAL & ETHNIC DISPARITIES (RED)*
- ❖ *Prevent further offending*
- ❖ *Avoid entry into criminal justice system*

4 YEARS INTO ALAMEDA PROGRAM...

WHAT DOES REAL ACCOUNTABILITY LOOK LIKE?

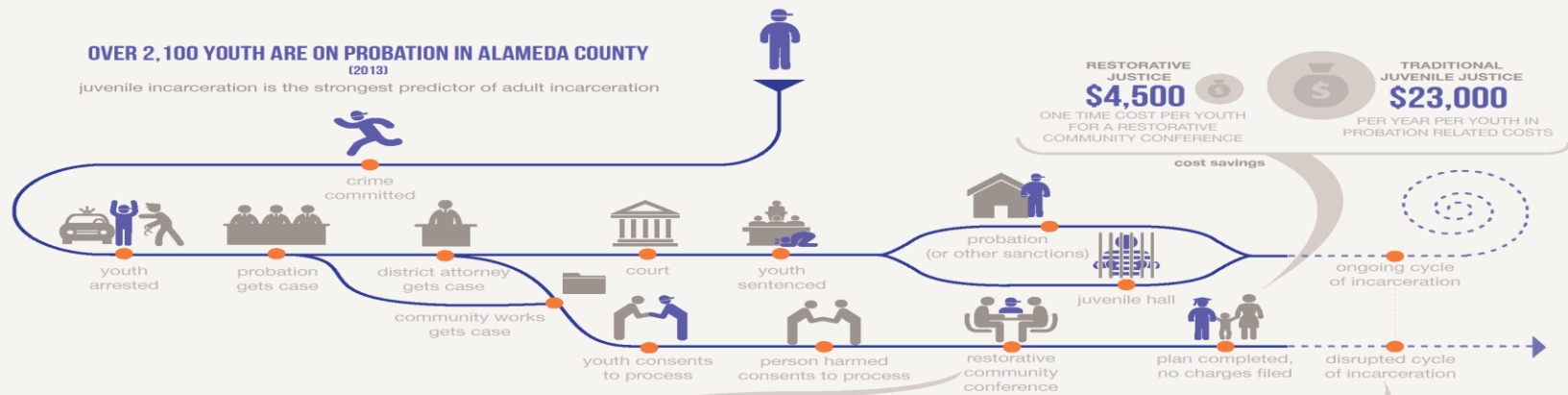
how restorative community conferencing allows youth to do right by victims of crime

OVER 2,100 YOUTH ARE ON PROBATION IN ALAMEDA COUNTY
(2013)

juvenile incarceration is the strongest predictor of adult incarceration

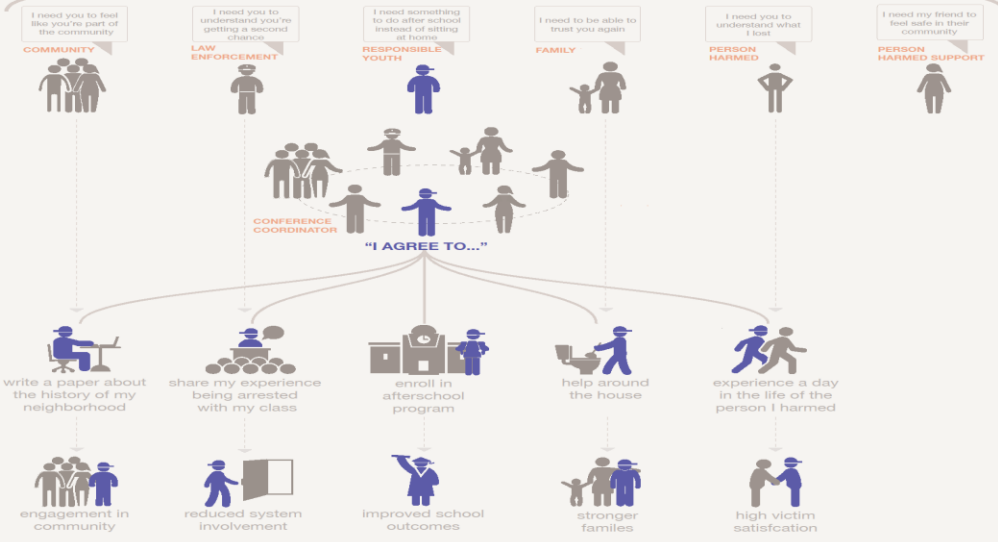
RESTORATIVE JUSTICE
\$4,500
ONE TIME COST PER YOUTH FOR A RESTORATIVE COMMUNITY CONFERENCE

TRADITIONAL JUVENILE JUSTICE
\$23,000
PER YEAR PER YOUTH IN PROBATION RELATED COSTS



RESTORATIVE COMMUNITY CONFERENCE

- Identify Everyone's Needs
- Agree to Restorative Plan
- Do What the Plan Requires
- See Positive Outcomes



REARRESTED & ADJUDICATED DELINQUENT (CHARGED) WITHIN 18 MONTHS

TRADITIONAL JUSTICE

• 45% REARRESTED
• 31.4% CHARGED

VS

RESTORATIVE JUSTICE

• 26.5% REARRESTED
• 11.8% CHARGED

Statistics are from the National Council on Crime and Delinquency (NCCD) Report (March, 2015). Ongoing assessment is being done by Impact Justice.
Created by Eliza Sherpa November, 2015
 communityworks

SNAPSHOT OF ALAMEDA COUNTY & SF PROGRAMS

- ❖ Funded primarily by 4 year Federal Grant – Alameda
- ❖ Funded from SF city budget – SF
- ❖ Serves 100 Alameda County youth per year
- ❖ Serves 25 San Francisco youth per year
- ❖ Diverts high-level misdemeanors/low-level felonies
- ❖ Pre-adjudicated Model
- ❖ Diversion from criminal justice system/alternative to school expulsion
- ❖ Surrogates used - Alameda
- ❖ Successful program completion results in no charges filed
- ❖ More than 95% of victims say they would recommend process - Alameda

YOUTH ACCOUNTABILITY CAN LOOK LIKE...





CONTACT INFORMATION

Yejide Ankobia, Program Manager
Restorative Community Conferencing Program
Community Works West
4681 Telegraph Avenue
Oakland, CA 94609
yankobia@communityworkswest.org
www.communityworkswest.org