



# Restoring the Urban Gang Member A Right Brain Approach

“Keeping The Brain and Body In Mind”

Carlos Alvarez MA



# LA IRP

LOS ANGELES  
INSTITUTE FOR  
RESTORATIVE  
PRACTICES


# Today's Intentions...

- Be fully presents
- Be curious with your judgments
- Be truthful with yourself



# Turn to your partner.....

- Have you ever worked with this dynamic?
- Describe one of your most difficult students



“Don't you know yet?  
It is Your Light  
that lights  
the worlds.”

- Rumi

“The right hemisphere, by contrast, yields a world of individual, changing, evolving, interconnected, implicit, incarnate, living beings within the context of the lived world, but in nature things are never fully graspable, always imperfectly known-and to this world it exist in a relationship of care” -Schoore



# Right Brain Restorative Practices



Right Brain Restorative Practices (RBRP) is an implicit-self centered modality which evolved through elements of social-emotional learning, humanistic psychology, and regulation theory. Right Brain Restorative Practices, premise is to help an individual build the container necessary to internalize remorse, gain insight, and empathically develop accountability and restoration.

# The Adolescent Psyche



**Implicit self-esteem** refers to a person's disposition to evaluate themselves in a spontaneous, automatic, or unconscious manner (*who we really are*).

**Explicit self-esteem** - which entails more conscious and reflective self-evaluation, can be manipulated (*who we think we are*).

**Implicit Cognition** -refers to unconscious influences such as knowledge, perception, or memory, that influence a person's behavior, even though they themselves have no conscious awareness whatsoever of those influences. (Memory as it associate to the body).

(Schoore 2005, 2007, 2009b)



# Gang Embedded

**Heightened conflict pathways**

**Compromised Support System(s)**

**Gang Embedded**

- 4-6 years of activity
- Engaging in Maladaptive behavior
- Retaliatory activity

**Developmental Pathways**

Increased susceptibility to peer pressure as a means of maintaining group identity

**Comprised Attachment**  
(Heaven of safety- has been broken)



**“Magnetism”**

Specific qualities that attracts other alpha males “Heavy gang member”

“If you have the heart”



# Gang Dynamics



The quality of the gang will take on the morals, or lack of morals, of the most active and deviant members (Five Percenter/ Gang *embedded*) often engorging in that lack of morals. This behavior often manifests itself in most or all of the gang's members, especially when they are together. This behavior can be explained as 'group dynamics,' which is essentially the way individuals behave when they are part of a group.

**When a youth becomes gang embedded he or she is immersed into a world where there is no regression.**

**At-risk conversion-** before joining a gang youth engage in minor crimes such as *status offenses* which include *graffiti and or petty crime*. Anti-social conduct exacerbates and is encouraged after the youth's initiation process is complete. This process leads to a higher level of violent behavior and serious crime, far beyond their nature and expectation.

(Anderson, 1998; Elijah, 1999)

# Emotional Processing Domains

- Protection (from pain)
- Transition to health is frightening
- **Relapse (is expected)**

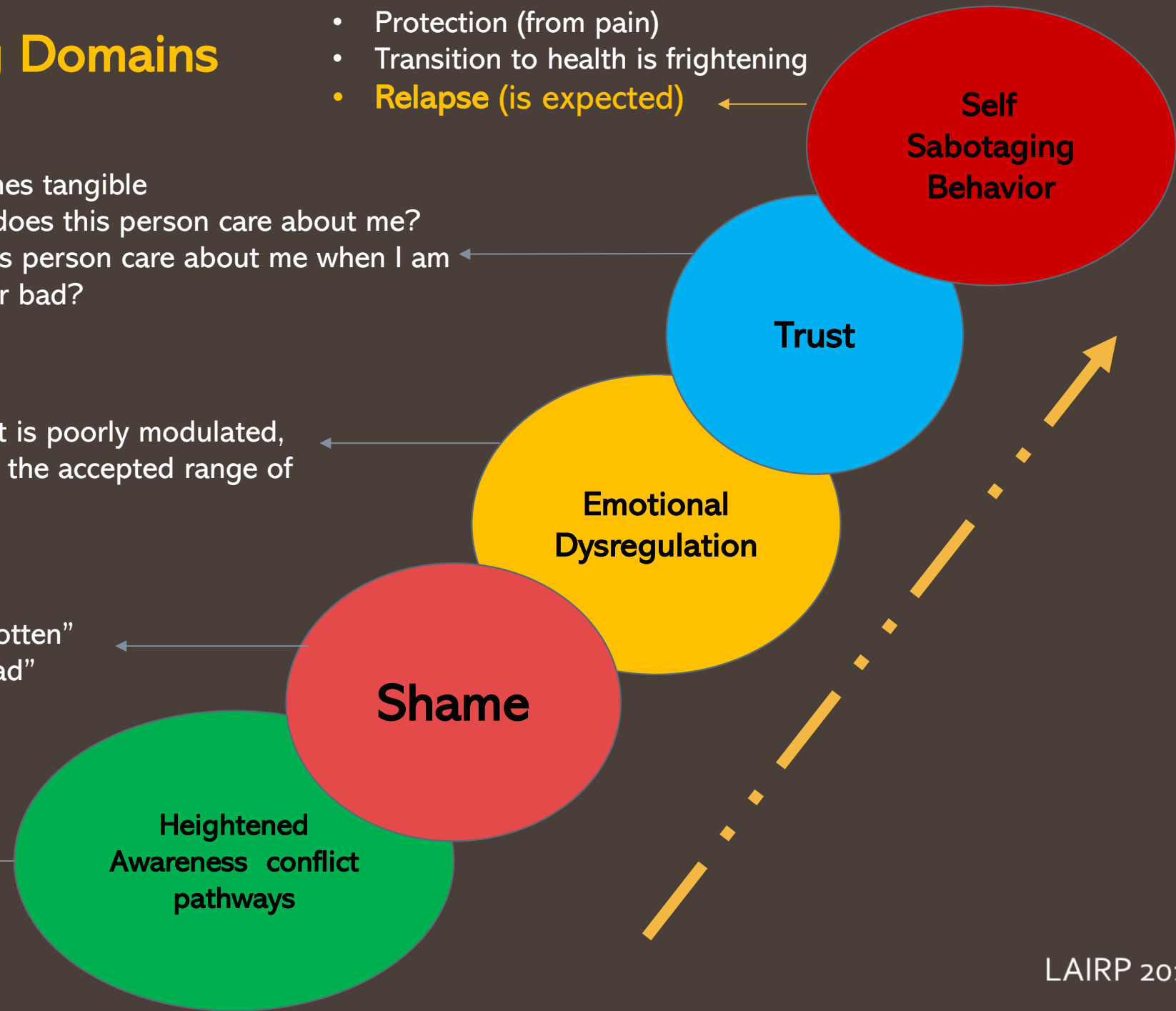
- Trust becomes tangible
- How much does this person care about me?
- How can this person care about me when I am defective/ or bad?

Emotional response that is poorly modulated, and does not fall within the accepted range of emotional response.

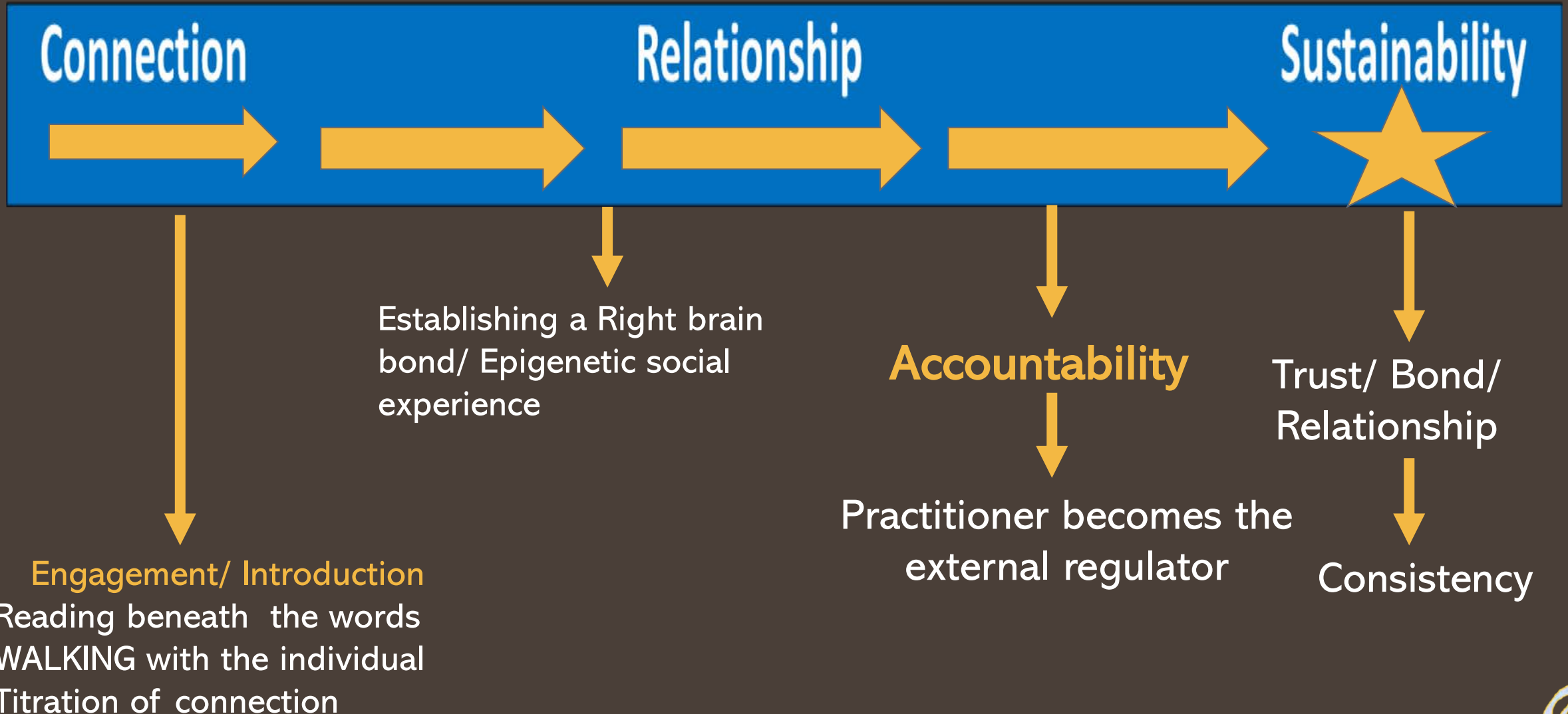
## Core Belief

- “ I am rotten”
- “I am bad”

- Individuals always at the ready.
- Emotional Ambivalence
- Somatic reactions override Cognitive reactions
- The body is subordinate to the CNS



# Restorative Continuum



# REPARING HARM

“if you dig a pit for others to fall into you will fall into it yourself.

-Rumi





### Initial Connection

- Home Visit
- Introduction by certified outreach worker
- Right Brain process begins

### Pre-Conference Phase

- Deconstruct event
- Bifurcate the event
- Narrative Restorative Justice

### Agreements

- Must be within capacity and reach
- Meaningful for all parties
- Mindful of restriction
- Short term

## RESTORATIVE CONFERENCE

### 4-6 hour Follow up conversation

- Check in
- Climate check
- Self-Regulation

### Priming Phase

- Cognitive Priming
- Emotional Priming
- What to expect
- Somatic manifestation
- Impulsivity

### Forensic Case Management

- Referrals
- System Navigation
- Walking with the individual



# Pre Conversation

# Governing Elements

## Pre Conversations are:

- Are explorative
- Social emotional template
- Focusing on building a container/ Capacity
- Epi-genetic exposure (Leaning into the discomfort)
- Process conflict
- Normalize and process feelings

## Practitioner needs to be mindful of his or her :

**Auditory Prosody**-Emotional Prosody

**Tempo of movement** -How are you coming in and out of the conversation

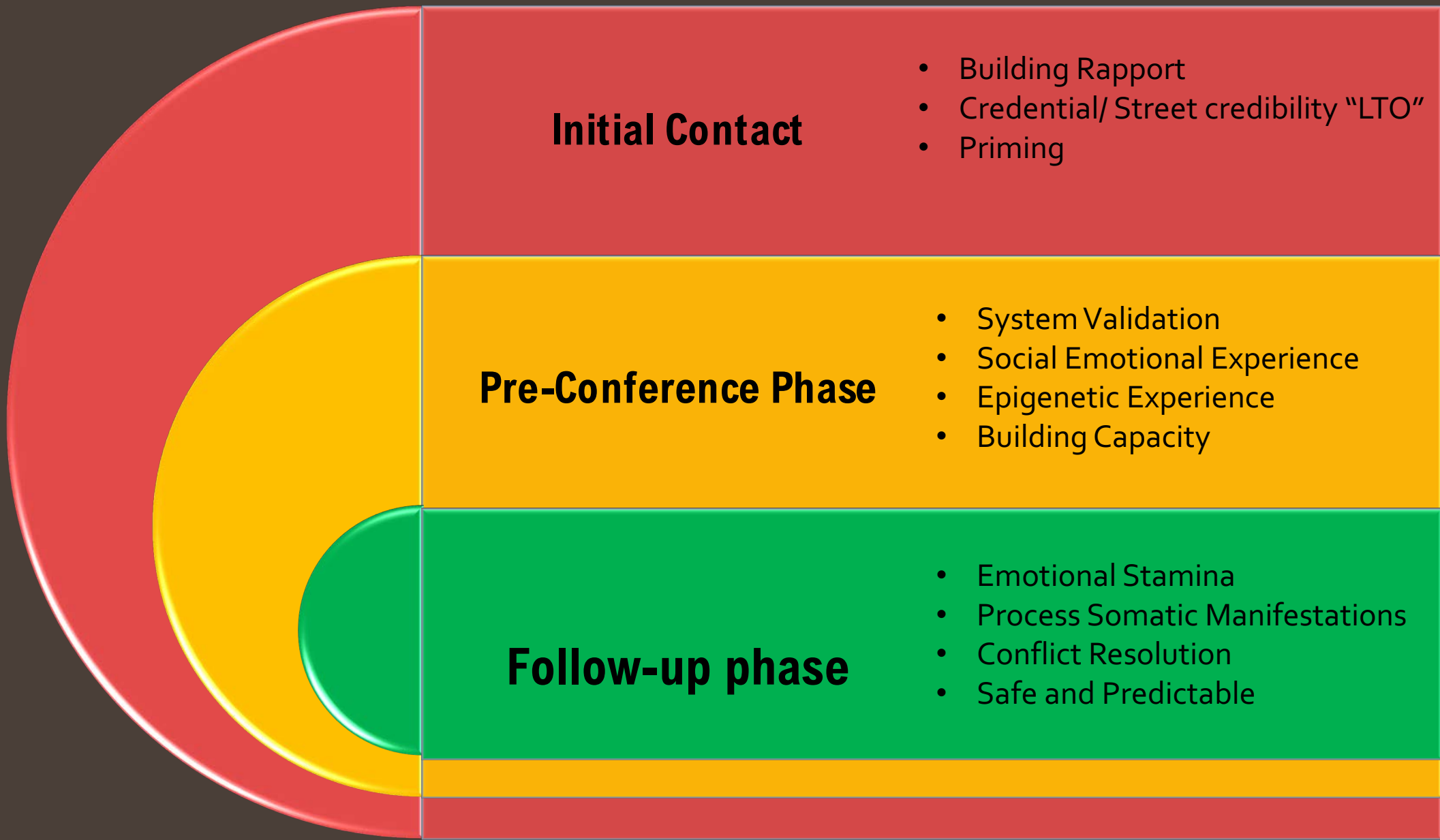
**Incipient Action**- Setting the foundation

Pre

Conversation

Second  
Phase

- Intensive Consultation with all key participants (Community Buy-in)
- Conversations revolve around two variables (Safety and Outcome)



## **Initial Contact**

- Building Rapport
- Credential/ Street credibility "LTO"
- Priming

## **Pre-Conference Phase**

- System Validation
- Social Emotional Experience
- Epigenetic Experience
- Building Capacity

## **Follow-up phase**

- Emotional Stamina
- Process Somatic Manifestations
- Conflict Resolution
- Safe and Predictable





# Facilitating The Conference

## Neutral Location

- a) Gang Intervention
- b) Constant communication with all parties
- c) Away from hot spots (Secure buildings) **NEVER IN PARKS OR REC CENTERS**

## Transportation

- a) How will they get to the location safely--- **You are liable at this point**
- b) Strategic arrival/ not arriving at the same time

## Debrief with each party (titrate the event)

- a) Discrediting phase
- b) Acknowledgment period

## Support System

- a) Gang Intervention
- b) Family or surrogate figure

# Developing Agreements

- Need help complying with agreement(s) – **Limited mobility and healthy peer support**
- **Forensic Case Management**
- Cognitively relevant
- Social emotional awareness- **Building capacity**
- Tangible points
- Restrictions and Limitations- **High retaliation**
- Consider safety when referring out



# Forensic Case Management

Case Managers are individuals who are trained forensic psychologists or individuals who have extensive experience in related social sciences with a B.A. or B.S. degree or higher. All individuals have extensive experience with the heavily criminally embedded population.

LAIRP Forensic Case Managers are paraprofessionals who understand and have acquired the required knowledge to navigate the juvenile, adult criminal justice, and mental health systems.

## Expertise:

- Re-entry/ Diversion
- LTO (License to Operate)
- Forensic Mental Health Clients
- Court adjudication

# Wraparound Services

- Outreach workers
- Non-profit agencies
- Faith Based Institutions



- Rogerian Approach
- Social Services
- Supportive Services



Search ID: kben639

"You've always been my rock.  
That's why I take you for granite."

**Carlos Alvarez**

**Contact: 562.440.7534**

**Email: [c.alvarez@lairp.us](mailto:c.alvarez@lairp.us)**

Area: Los Angeles

Areas of focus

- Gang membership
- Violence Interruption
- Forensic Psychology
- Behavioral epigenetics
- Positive Behavior Intervention Supports PBIS
- School discipline
- Professional developments/ Trainings